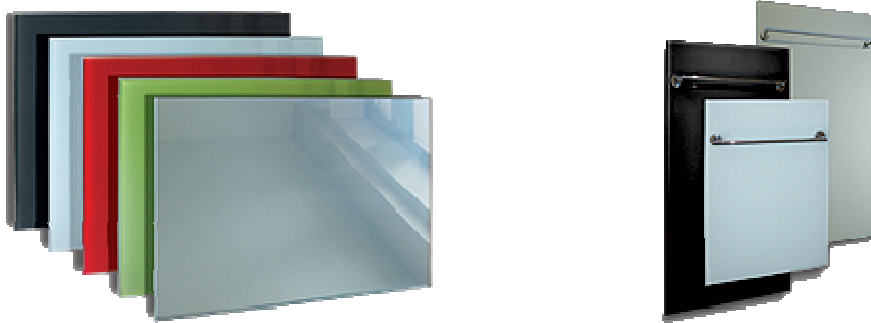


GR(T) SET panels with integrated wireless regulation These are radiant heating panels, made from 12 mm thick tempered safety glass, a heating element, limiting thermostat and supply cable. These panels are intended for use mainly in the heating of living spaces. However, a GRT type is also on offer, equipped with a chrome towel rail and intended specially for the heating of bathrooms.



As glass panels are meant to be used mainly for heating, it is expected that they will be included in the regulation system of the whole heating system, which will provide the required comfort and economic operation of the whole heating system. For this reason, the panels aren't equipped with a thermostat (like, for example, direct-heating convectors), but only with a thermal fuse which prevents the heating panel from becoming overheated, e.g. if it is covered by the user.

Despite this, situations might occur when the glass panels cannot be connected to a master regulation system – usually when the panel has been installed as an additional appliance and construction work in the form of altering the electrical installation is undesirable or even impossible. Therefore, FENIX have extended their product range to include an altered version of these panels, both in the standard and the bathroom alternatives – the GR SET and GRT SET types.

These are standard GR and GRT glass panels which additionally feature an integrated wireless receiver and a supply lead equipped with a plug. As a wireless programmable thermostat is part of the package, it is possible to bring the panel into operation immediately after unwrapping it. Simply hang it on the wall and plug it into a socket, without the necessity of assistance from an installation company.



GR heating panel supports. Another accessory which is intended for glass panels – both in the GR and GR SET variants – is a set of chromium-plated supports. In the case when the user doesn't want to or cannot hang the GR panel on the wall – for example, on glass surfaces – FENIX offers a set of chromium-plated supports which allow placement of the panel on the floor. The panel is simply inserted into the cutouts of the supports, which are subsequently attached to the panel with the help of adjustment screws. The panel is stable on the supports, and hence it isn't necessary to anchor it additionally; the lower edge of the heating panel is 55 mm above the floor. Having said this, in the case of a permanent installation (e.g. in front of a glass surface) it is advisable to attach the supports to the floor with the help of screws. Two openings with a diameter of 6 mm are prepared in the base for the screws.



The set contains chromium-plated supports (2 pcs) with a 130mm-diameter base, plastic covers (slide-on) (4pcs) to cover the screw brackets at the rear side of the GR panels, and a mains plug. If it is needed, and with the use of an additionally installed plug, the glass radiant panel can be used as a convenient portable heater.

Caution

The supports are intended only for the GR type and only for horizontal installation. In the case of vertical installation (particularly for the GR 1000), the risk of the user accidentally knocking over the panel is significantly higher. The standing panel mustn't be exposed to excessive pressure – if it is placed freely, there is a danger of it being pushed over, while if the supports are attached to the floor, there is a risk of damage to the glass where it is mounted on the supports.